

Wireless temperature sensor measures  
-55°C to 125°C (-77°F to 257°F)



**THERMOTEX**

Wireless soil moisture sensor measures  
0% to 100% volumetric water content



**SOILMOTEX**

Wireless temperature sensor measures  
-200°C to 200°C (-328°F to 392°F)



**THERMOTEX X**

The Zynect Sensor Suite

**Thank you**  
for purchasing  
a Zynect Sensor,  
we hope you enjoy it!

If you are not completely  
happy with this product,  
please contact us directly.  
[support@zynect.com](mailto:support@zynect.com)



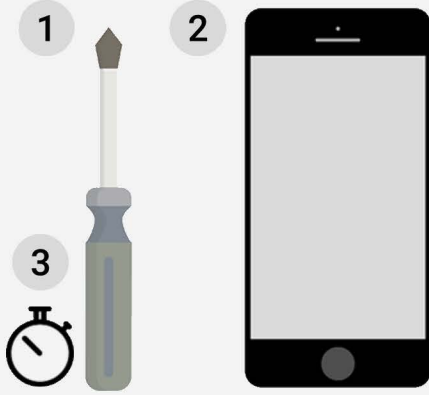
[zynect.com](http://zynect.com)

 Connecting  
you with  
actionable  
information.

Quick setup  
instructions inside.  
**Need Help?**  
[support@zynect.com](mailto:support@zynect.com)

**Simple.**  
**Durable.**  
**Accurate.**

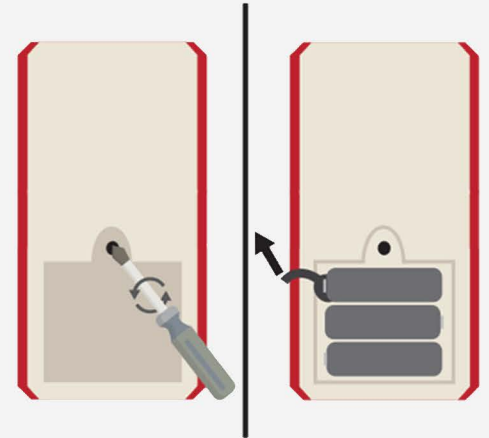
# QUICK SETUP INSTRUCTIONS



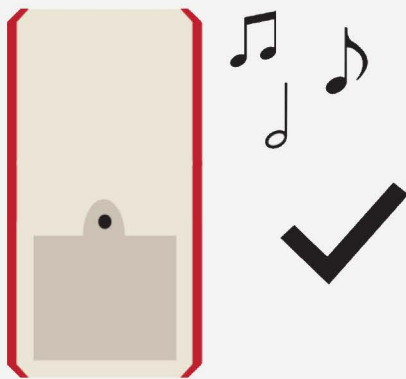
You'll need a screwdriver, smartphone, and 1 to 5 minutes to get started.



Download the Zynect Sensors app on your Android or iOS device. Bluetooth must be enabled to complete sensor setup.



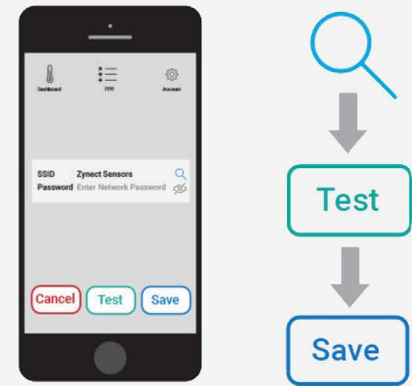
Open the battery compartment, remove the paper, secure battery in place, and screw closed.



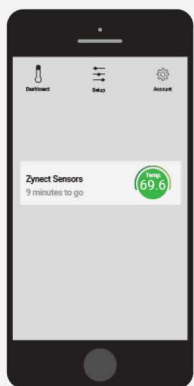
Sensor will play a short tune, confirming it is in configuration mode and ready to setup.



Go to the setup tab within the app and select the name of your sensor (5 letter code on the back of the device).

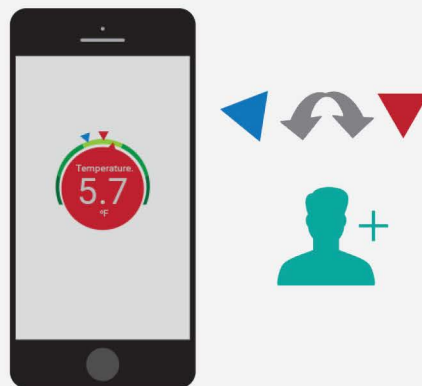


Select the search icon next to SSID to find your Wi-Fi network. Add your password (leave blank for open networks), click test and then save.

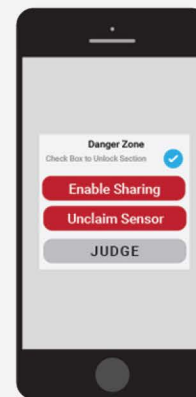


Dashboard

Go to the dashboard section of the app to see your sensor data.



Hold and drag the blue and red markers to adjust min and max alerts. You must add contacts to trigger alerts, start by adding yourself.



Safely and securely share your data with others. Unlock the Danger Zone at the bottom of the sensor page and click 'ENABLE SHARING'.

## If you don't hear beeping:

1. If it's the first time you've put the batteries in and you haven't configured it, and you don't get the beeps, you should try using the magnet just in case. If that doesn't work, it's probably dead batteries.
2. If it's not the first time you've put the batteries in and you've previously configured it, you must use the magnet. If your efforts to use the magnet don't work, it's almost certainly that the batteries are dead.
  - 2a. Why are the batteries dead? Almost certainly because you installed the batteries but didn't successfully configure it for Wi-Fi or LoRaWAN so it stayed in the (high energy use) configuration mode. When the sensor is in this mode it makes a double-beeping noise every two minutes to let you know something is up.

For complete product manual, video tutorials & tips, visit [zynect.com/setup](https://zynect.com/setup)



After initial setup, place magnet on reset sticker to re-enter setup mode.